

### Driver LCBI 25W 700mA BASIC phase-cut SR advanced series



#### Product description

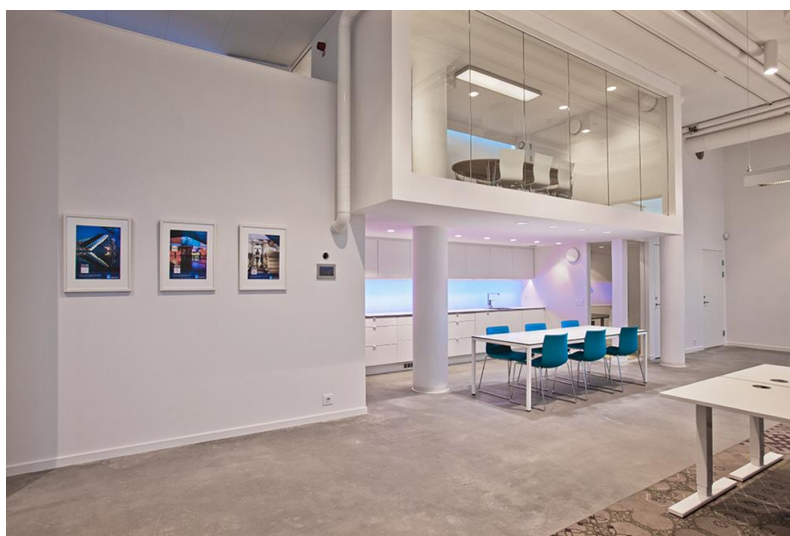
- \_ Dimmable via leading edge and trailing edge phase dimmers
- \_ Output dimmed analogue (current amplitude)
- \_ Dimming range typ. 5 to 100 % (depending on dimmer)
- \_ Type of protection IP20
- \_ Screw terminal
- \_ Connecting cable, wire cross-section 0.5 – 2.5 mm<sup>2</sup>
- \_ SELV
- \_ 700 mA output current
- \_ Output power 25 W
- \_ Nominal lifetime up to 50,000 h (at ta 50 °C with a failure rate ≤ 0.2 % per 1,000 h)
- \_ 5 years guarantee (conditions at [www.tridonic.com](http://www.tridonic.com))

#### Properties

- \_ Casing: polycarbonate, white
- \_ Compact dimensions
- \_ Overload protection
- \_ Short-circuit protection
- \_ No-load protection

#### Website

<http://www.tridonic.com/89800307>



Spotlights



Downlights



Linear



Area



Floor | Wall



Free-standing



Street

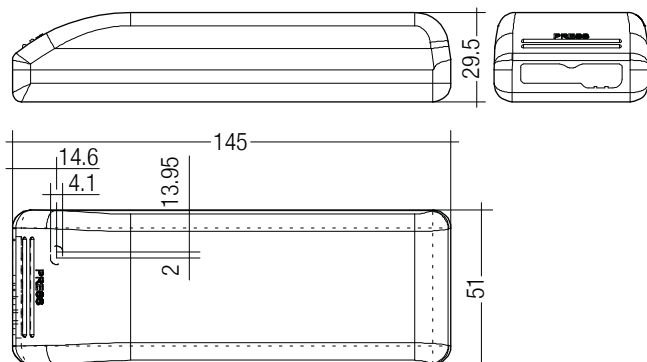


Decorative



High bay

**Driver LCBI 25W 700mA BASIC phase-cut SR**  
advanced series



**Ordering data**

Type	Article number	Packaging, carton	Packaging, pallet	Weight per pc.
LCBI 25W 700mA BASIC phase-cut SR	89800307	10 pc(s).	600 pc(s).	0.115 kg

**Technical data**

Rated supply voltage	220 – 240 V
AC voltage range	198 – 264 V
Mains frequency	50 / 60 Hz
Typ. rated current (at 230 V, 50 Hz, full load)	130 mA
$\lambda$ at full load	0.99
$\lambda$ over full operating range (min.)	0.97
Output current tolerance at full load <sup>①②③</sup>	± 7.5 %
Typ. current ripple (at 230 V, 50 Hz, full load)	± 30 %
Starting time (at 230 V, 50 Hz, full load)	≤ 0.1 s
Turn off time (at 230 V, 50 Hz, full load)	≤ 0.1 s
Hold on time at power failure (output)	0 s
Ambient temperature $t_a$	-25 ... +50 °C
Ambient temperature $t_a$ (at lifetime 50,000 h)	50 °C
Max. casing temperature $t_c$	75 °C
Storage temperature $t_s$	-40 ... +85 °C
Lifetime	up to 50,000 h
Guarantee	5 Year(s)
Dimensions L x W x H	145 x 51 x 29.5 mm

**Approval marks**



**Standards**

EN 55015, EN 61000-3-2, EN 61000-3-3, EN 61347-1, EN 61347-2-13, EN 61547, EN 62384

**Specific technical data**

Type	Efficiency <sup>①</sup> at full load	Efficiency <sup>②</sup> at min. load	Output current <sup>③</sup>	Max. repetitive output peak current <sup>④</sup> at full load	Max. repetitive output peak current <sup>④</sup> at min. load	Max. non-repetitive output peak current <sup>④</sup> at full load	Max. non-repetitive output peak current <sup>④</sup> at min. load	Max. forward voltage <sup>⑤</sup>	Min. forward voltage <sup>⑤</sup>	Max. output voltage (U-OUT)	Max. input power	Max. output power
LCBI 25W 700mA BASIC phase-cut SR	83 %	82 %	700 mA	950 mA	1,180 mA	950 mA	1,180 mA	35 V	17 V	39 V	30 W	25 W

- ① The trend between min. and full load is linear.
- ② Output current tolerance at min. load max. 22 %.
- ③ Output current is mean value.
- ④ Test result at 230 V, 50 Hz.
- ⑤ At failure mode.

**Standards**

- EN 55015
- EN 61000-3-2
- EN 61000-3-3
- EN 61347-1
- EN 61347-2-13
- EN 61547
- EN 62384

**Glow wire test according to IEC 60695-2-11**

850 °C passed.

**Overload protection**

If the maximum load is exceeded by a defined internal limit, the LED Driver reduces the LED output current. After elimination of the overload the nominal operation is restored automatically.

**Short-circuit behaviour**

In case of a short circuit on the secondary side (LED) the LED Driver switches into hic-cup mode. After the removal of the short-circuit fault the LED Driver will recover automatically.

**No-load operation**

The LED Driver works in constant current mode. In no-load operation there is the max. output voltage at the output (see page 1).

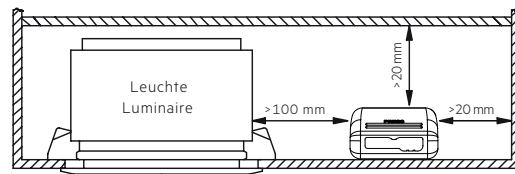
**Installation instructions**

Note the requirements set out in the document  
 LED\_driver\_installation\_advice.pdf  
 (<http://www.tridonic.com/com/en/technical-docs.asp>).

Hot plug-in or secondary switching of LEDs is not permitted and may cause a very high current to the LEDs.

**Fixing conditions when using as independent Driver**

Dry, acidfree, oilfree, fatfree. It is not allowed to exceed the maximum ambient temperature (ta) stated on the device. Minimum distances stated below are recommendations and depend on the actual luminaire. Device is not suitable for fixing in corner.

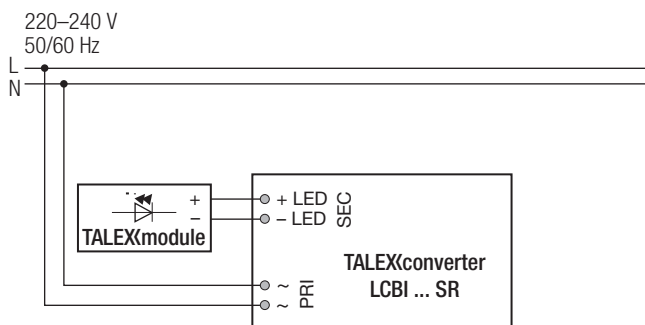


**Maximum loading of automatic circuit breakers in relation to inrush current**

Automatic circuit breaker type									Inrush current	
	C10	C13	C16	C20	B10	B13	B16	B20	I <sub>max</sub>	Time
Installation Ø	1.5 mm <sup>2</sup>	1.5 mm <sup>2</sup>	1.5 mm <sup>2</sup>	2.5 mm <sup>2</sup>	1.5 mm <sup>2</sup>	1.5 mm <sup>2</sup>	1.5 mm <sup>2</sup>	2.5 mm <sup>2</sup>		
<b>LCBI 25W 700mA basic phase-cut SR</b>	30	39	48	60	30	39	48	60	2.5 A	60 µs

This are max. values calculated out of inrush current! Please consider not to exceed the maximum rated continuous current of the circuit breaker. Calculation uses typical values from ABB series S200 as a reference. Actual values may differ due to used circuit breaker types and installation environment.

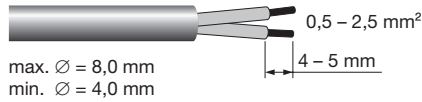
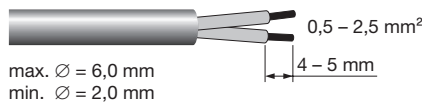
**Wiring diagram**



**Wiring type and cross section**

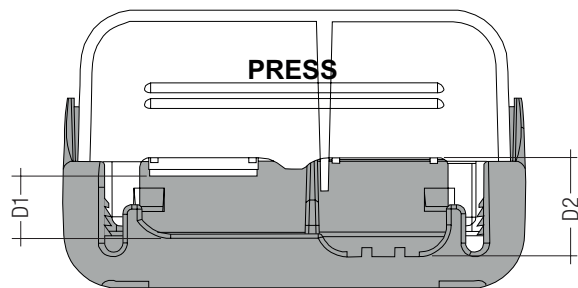
The wiring can be in stranded wires with ferrules or solid. For perfect function of the cage clamp terminals the strip length should be 4 – 5 mm for the input terminal.

The max. torque at the clamping screw (M3) is 0.2 Nm.

**Input terminal (D2)****Output terminal (D1)**

To get a proper working strain relief it is recommended that the cable jacket diameter of the side D2 is 2 mm bigger than the diameter of the side D1.

(This can vary if the used cable jacket material varies from side D2 to D1 in pinching property).



Depending on the used flaps of the terminal following cable jacket diameter difference between the side D2 and D1 terminals is recommended:

Side D1		Side D2		Difference D2 - D1
Housing bottom	Cover terminal	With flap	Without flap	
With flap	Without flap	With flap	Without flap	
x	-	x	-	3.5 mm
x	-	x	-	5.5 mm
x	-	-	x	3.5 mm
-	x	x	-	3.5 mm
-	x	-	x	1.5 mm
x	-	-	x	1.5 mm
-	x	x	-	1.5 mm
-	x	-	x	-0.5 mm

**Wiring instructions**

The secondary leads should be separated from the mains connections and wiring for good EMC performance.

Maximum lead length on secondary side is 2 m. For a good EMC performance keep the the LED wiring as short as possible.

To comply with the EMC regulations run the secondary wires (LED module) in parallel.

Through wiring is not possible.

To avoid the damage of the Driver, the wiring must be protected against short circuits to earth (sharp edged metal parts, metal cable clips, louver, etc.).

**Insulation and electric strength testing of luminaires**

Electronic devices can be damaged by high voltage. This has to be considered during the routine testing of the luminaires in production.

According to IEC 60598-1 Annex Q (informative only!) or ENEC 303-Annex A, each luminaire should be submitted to an insulation test with 500 V<sub>DC</sub> for 1 second. This test voltage should be connected between the interconnected phase and neutral terminals and the earth terminal.

The insulation resistance must be at least 2 MΩ.

As an alternative, IEC 60598-1 Annex Q describes a test of the electrical strength with 1500 V<sub>AC</sub> (Or 1.414 x 1500 V<sub>DC</sub>). To avoid damage to the electronic devices this test must not be conducted.

**Maximum number of switching cycles**

All LED Driver are tested with 50,000 switching cycles.

**Additional information**

Additional technical information at [www.tridonic.com](http://www.tridonic.com) → Technical Data

Lifetime declarations are informative and represent no warranty claim.

No warranty if device was opened.